

# Fashion Flair

## Sew a pull-on jersey hat

Make this simple jersey cap in a couple of hours. Vary the look by making the brim in a contrasting color or the crown two-tones, or pop on a sultry rose or bossy bunch of cherries. Dress it up or down to suit your mood.

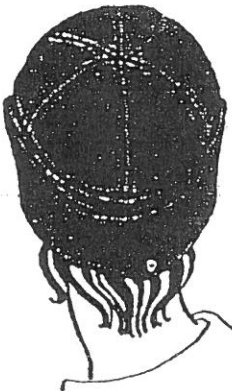
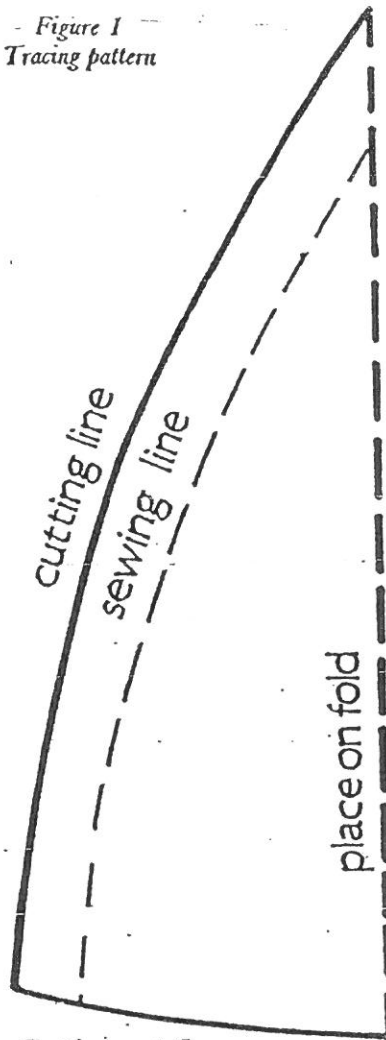


Figure 1  
Tracing pattern

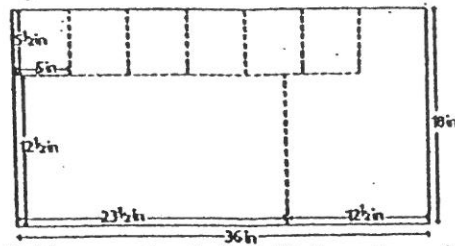


### Cutting out the cap

From the  $\frac{1}{2}$  yd of jersey, cut a strip  $12\frac{1}{2}$  in wide and  $23\frac{1}{2}$  in long. This is for the brim (Figure 2).

Cut 6 rectangles from the remaining fabric, each measuring  $5\frac{1}{2}$  in by 5 in, with the grain of the fabric running parallel with the  $5\frac{1}{2}$  in side, as shown. These are for the crown pieces.

Figure 2

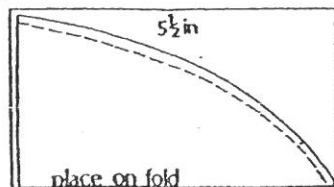


Fold one rectangle in half along the grain and pin the pattern to it (Figure 3).

Cut out the crown piece.

Cut out the other crown pieces in the same way.

Figure 3



### Making the cap

**The crown.** Place two crown pieces together, right sides facing, pin, baste and then machine stitch along the sewing line. Press the seam open. Repeat with the other two pairs of crown pieces. Join the pairs together as shown in Figure 4. Press all the seams open and topstitch  $\frac{1}{4}$  in away from each seam (Figure 5).

Figure 4

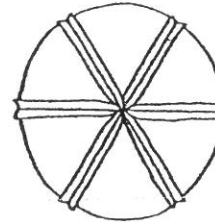
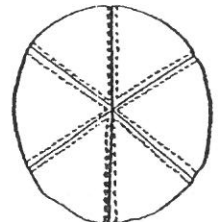
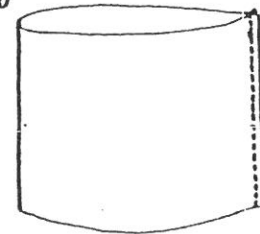


Figure 5



**The brim.** Fold the brim piece in half and machine stitch up the side as shown in Figure 6. Press the seam open.

Figure 6



**Joining the brim to the crown.** Pin, baste and machine stitch the brim to the crown with a  $\frac{1}{2}$  in seam allowance (Figure 7). Fold the brim down as shown in Figure 8 and press the seam carefully.

Topstitch around the seam.

Fold up  $\frac{1}{2}$  in along the raw edge of the brim and press.

Figure 7

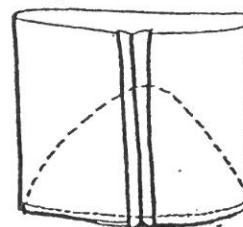
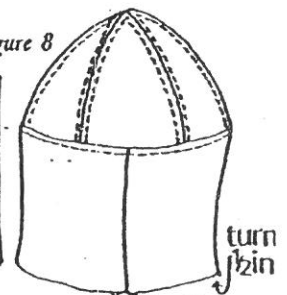
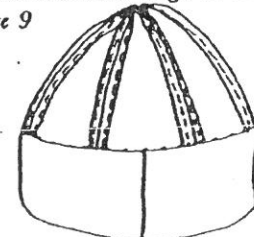


Figure 8



Turn the whole cap inside out and roll up the brim until the folded edge is just above the crown seam line. Pin, baste and hem the edge down (Figure 9). Topstitch around the lower edge of the brim.

Figure 9



### You will need

- |  $\frac{1}{2}$  yd wool or cotton jersey
- | Matching sewing thread
- | Tracing paper
- | Pencil

### Making the pattern

Trace the shape of the crown piece from the tracing pattern (Figure 1). Cut out the shape.