

CANCER *talk* for Primary Care

› YOUR SOURCE FOR UP-TO-DATE CANCER CARE INFORMATION

› INTRODUCING OUR NEW TITLE AND TAGLINE

We are excited to announce the new title and tagline for our newsletter! This update better represented our dedication to connecting with primary care providers like you. Our goal is simple: to keep you updated with the latest news, insights, and upcoming events that directly impact your practice.

We'd love to hear your feedback. Please visit this link <https://forms.office.com/r/HmKGRKMrxx> or scan the QR code to share your thoughts with us.



HPVtc NOW AVAILABLE TO MANITOBA COLPOSCOPISTS

Read more about the Human Papillomavirus Test of Cure on page 3.

WEBINARS, EVENTS, AND MORE!

Learn more about upcoming events offered by CCMB on page 6.

CCMB WELCOMES DR. ASHLEIGH SPRANGE

Meet the Pain and Symptom Clinic's new specialist on page 7.

If you have questions regarding the work-up of suspected cancer or any other cancer-related questions, please contact the CancerQuestion Helpline for Healthcare Professionals, Monday to Friday 8:30 a.m. to 4:30 p.m. Call (204) 226-2262.

Message from the President and CEO



OUR VISION: LEADING THE WAY IN CANCER CONTROL

Dr. Sri Navaratnam, PRESIDENT & CEO, CANCERCARE MANITOBA

In the spring of 2024, CCMB began strategic planning to refresh our Vision and Mission, the Roadmap to Cancer Control for Manitoba 2020, and to develop a strategic framework for the Paul Albrechtsen Research Institute CancerCare Manitoba. Much has changed in the health landscape over the past five years; however, our commitment to outstanding cancer care remains steadfast.

Our strategic planning process involved consultations with many, including patients, healthcare providers, support staff, researchers and regional health partners across the province who helped identify the strengths, challenges and opportunities that would enable CCMB to improve the delivery of cancer services in Manitoba. The refreshed Roadmap is guided by 5 Priorities to strengthen prevention, early diagnosis and delivery of sustainable, high-quality, and person-centred cancer care. The Priorities are rooted in three Foundational Principles – Research and Innovation, Health Equity and Partnership – to enable access and provision of state-of-the-art and equitable cancer care regardless of age, race, culture, ability, gender, religion or location in the province. The Priorities call for innovative solutions and collaboration across communities, policymakers, researchers and the provincial healthcare system to improve efficiencies and the effectiveness of services to deliver the best cancer care to the diverse population of Manitoba.

We are now concluding the process. It will be our privilege to launch the Refreshed Roadmap to Cancer Control for Manitoba to guide the provision of cancer services and lead the way in cancer control in Manitoba and beyond.

As recently announced at CCMB, I will leave my post as President and CEO in mid-April, having served for two five-year terms and an additional 1.5 years. Leading CancerCare Manitoba and serving Manitobans over the past 11 years has been the greatest honour of my career. Over these years, our priority on community engagement, including with our primary care partners, has been steady, and relationships have been strengthened. Only through strong collaboration with all healthcare partners are we well-positioned to provide high-quality cancer services to all Manitobans, to improve their cancer experience, and to improve cancer outcomes.

The establishment of CCMB's Department of Primary Care Oncology and affiliated Section of Primary Care Oncology in the Department of Family Medicine at the University of Manitoba, led by Dr. Tunji Fatoye, is a testament to our commitment to primary care as a key player in advancing cancer control. The department and section were the first of its kind in Canada. It is essential to continue strengthening and expanding this commitment to primary care oncology in the future.

It has been my honour to work with you towards our goal to achieve cancer control for the people of Manitoba. Thank you for supporting CancerCare Manitoba and caring for individuals with cancer.

Dr. Sri Navaratnam,
President and CEO, CancerCare Manitoba

UPDATES FROM CANCERCARE MANITOBA SCREENING PROGRAMS

HPV Test of Cure

On January 29, 2025, the Human Papillomavirus test of cure (HPVtc) became available to Manitoba Colposcopists. HPV test of cure is an HPV test done in colposcopy. It is used to help colposcopists determine if a patient needs more follow-up in colposcopy, or if medically appropriate, to discharge them to primary care. HPV test of cure tests for the same three categories of HPV as done in HPV triage:

- HPV 16,
- HPV 18, and
- HPV Other (group of 12 other high-risk HPV types).

A Webinar for Primary Care Providers

Changes in HPV Testing at Colposcopy


Wednesday, March 26, 2025


8:00 a.m. – 9:00 a.m.

Join Dr. Sarah Kean, Medical Lead, CervixCheck, CancerCare Manitoba, in this interactive presentation on the assessment and treatment of abnormal cytology, and learn how the newly implemented HPV test of cure will benefit your patients.

To register, visit cancercare.mb.ca/screening/hcp/education or scan the QR code.









Changes in HPV Testing at Colposcopy

A webinar for primary care providers



Join Dr. Sarah Kean, Medical Lead, CervixCheck CancerCare Manitoba in this interactive presentation on the assessment and treatment of abnormal cytology and learn how the newly implemented HPV test of cure will benefit your patients.

Wednesday
March 26, 2025
8:00 - 9:00 AM



Register at cancercare.mb.ca/screening/hcp/education



SIT. SWAB. SEND.

ColonCheck

Order yours today

cancercare.mb.ca/screening/info/colon

Mail Disruption



Due to last year's mail disruption, our Screening programs faced challenges in sending reminder letters to patients about their upcoming screenings.

Please encourage your patients to contact the Screening programs at 1-855-952-4325 to check if they are due for screening.

Community Profiles

First Nations • Métis • Inuit



Indigenous Community Profiles - Community Highlight



St. Adolphe is a small community in the Rural Municipality of Ritchot, located 12 km south of Winnipeg along the east bank of the Red River. With a population of 1,006 (as of the 2021 Census), it is part of an active Métis Local (#81) under the Manitoba Métis Federation (MMF).

The community has access to healthcare services, with the nearest hospital being Victoria Hospital in Winnipeg. Medical services like pharmacies, bloodwork, and cancer care are available in Winnipeg. Senior services, transportation, and basic needs are met locally or in nearby towns.

Mental health support is accessible through hotlines or in Winnipeg. Transportation to Winnipeg is efficient, with minimal disruptions. Specialized care options are available in Steinbach and Boundary Trails, and home care, palliative care, and physiotherapy are accessible in Winnipeg. The community also has the St. Adolphe Arena for local care.

Visit ccmbindigenouscommunityprofiles.ca

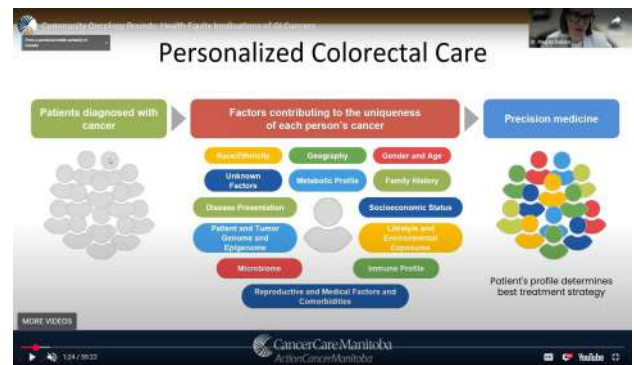
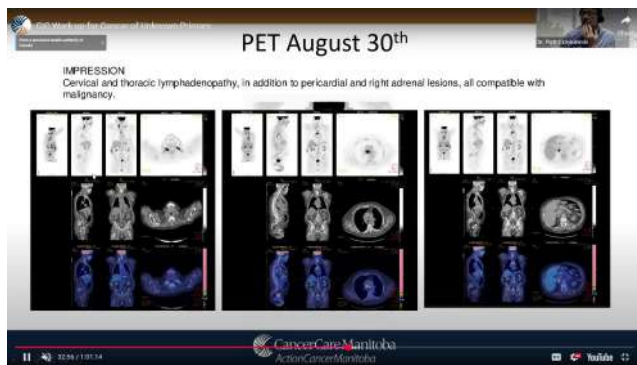


Community Oncology Rounds and Cases in Cancer Videos Now Available Online!

We're thrilled to announce that the Community Oncology Rounds and Cases in Cancer videos are now available online! These invaluable resources provide insights into the latest advancements in oncology, featuring expert discussions, case reviews, and multidisciplinary perspectives. Whether you're a healthcare professional, researcher, or simply interested in cancer care, these videos provide a unique behind-the-scenes look at how doctors collaborate, analyze cases, and share their expertise in bladder and upper tract cancers.

You can access these videos on the CancerCare Manitoba website. Stay informed and enhance your knowledge with these educational sessions. Don't miss out - explore the videos today.

To watch, visit cancercare.mb.ca/For-Health-Professionals/conferences/professional-development/index.html



Community Profiles

First Nations • Métis • Inuit



Indigenous Community Profiles - Community Highlight



[Manto Sakahigan](#), also known as God's Lake Narrows, is a remote First Nation community in Manitoba with a population of 980 (2021 Census). Accessible only by air, the primary language spoken here is Cree.

The community is served by a Nursing Station, which may face closures due to staffing shortages and weather conditions. Health Director Iona Okimow oversees the station, reachable at 204-335-2557. Telehealth services are available, but it's best to confirm availability in advance.

Cancer care services are accessible, with the nearest Radiation Therapy Centre in Winnipeg (CCMB) and a Community Cancer Program in Thompson. For assistance, the Cancer Navigation Line for the North is 1-855-740-9322.

For health-related inquiries, contact the Band Office at 204-335-2130.

Visit ccmbindigenouscommunityprofiles.ca



UPCOMING EVENTS

SAVE THE DATE

Small Group Session

Gynecological Cancers Educational Program



May 3, 2025 | 7 a.m. - 4 p.m.
Wyndham Garden Winnipeg Airport
460 Madison Street, Winnipeg

Spots are limited.

 **CancerCare Manitoba**
ActionCancerManitoba

More details to follow.

SAVE THE DATE

Health Equity Week 2025

Embedding equity in our lives, work, and organization



April 7-11, 2025 | Webinar series

Presentations, panel discussions, films

Topics include:

- Rural and remote populations
- Newcomers
- Land Acknowledgments
- Trans and gender-diverse persons
- Microaggressions

Session topics are subject to change. Agenda and details to follow.

 **CancerCare Manitoba**
ActionCancerManitoba

NEW PHYSICIAN PROFILE

Dr. Ashleigh Sprange



We are delighted to announce that Dr. Ashleigh Sprange has joined the Palliative Care Program as the Pain and Symptom Clinic Specialist. Dr. Sprange is a physician consultant with the WRHA Palliative Care Program.

Before her medical career, Dr. Sprange earned a Bachelor of Arts in Kinesiology and Applied Health from the University of Winnipeg and worked as a Certified Athletic Therapist. She obtained her Bachelor of Science in Medicine and Medical Degree in 2014, followed by a Family Medicine Residency in 2016 from the University of Manitoba, Max Rady College of Medicine. She completed her fellowship in Palliative Medicine at the University of Alberta in 2017.

Dr. Sprange primarily focuses on palliative care and pain and symptom management. She is the attending physician at Brummitt-Feasby ALS House, overseeing the care of individuals with motor neuron diseases. Additionally, she serves as the attending physician and Medical Director at St. Amant, Health & Transition Services, where she cares for individuals with intellectual and developmental delays throughout their lives.

Dr. Sprange is also a lecturer in the Department of Family Medicine at the University of Manitoba. Her main research interest is in understanding goals of care, advanced care planning, and normalizing conversations about these topics.

Please join us in welcoming Dr. Sprange to our team.

Community Profiles

First Nations • Métis • Inuit



Indigenous Community Profiles - Community Highlight




Minegoziibe Anishinabe, also known as Pine Creek First Nation, is a community with a population of 700 (2021 Census), located in Camperville, Manitoba, and accessible by road. The primary language spoken is Ojibwe.


The community is served by the Pine Creek Health Centre, which can be reached at 204-524-3000. The Health Director is Ms. Teresa McIvor Flatfoot. The Cancer Navigation Line for the Prairie Mountain region is available at 1-855-346-3710, with the nearest Radiation Therapy Centre located in Brandon (WMCC) and a Community Cancer Program in Swan River.

Telehealth services are available at the Pine Creek Health Centre.

Visit ccmbindigenouscommunityprofiles.ca



 **CancerCare Manitoba**
ActionCancerManitoba

 **Blood Disorders Day 2025** | FOR Health Professionals


HYBRID CONFERENCE
FRIDAY, MAY 30, 2025
8:30 AM - 4:00 PM / Registration 8:00 AM


TOPICS WILL INCLUDE:

- > *Does my patient have a blood cancer? Myeloma, CLL and more!*
- > *Clotting Conundrums – treatment of arterial and venous thrombosis*
- > *Pearls for treating iron deficiency in Manitoba*
- > *Ask the Expert: Bring Your Own Cases!*

REASONS TO CONSIDER:

- > *Topics chosen based on feedback from primary care providers*
- > *Presentations supplemented with practical algorithms for everyday use*
- > *Blood Disorders Day is highly rated by participants*
- > *Interact with your local hematologists*

 **REGISTER NOW!**
BY SCANNING THIS QR CODE

 **University of Manitoba**



@CancerCareMB



@CancerCareMB



@cancercare.mb

www.cancercare.mb.ca