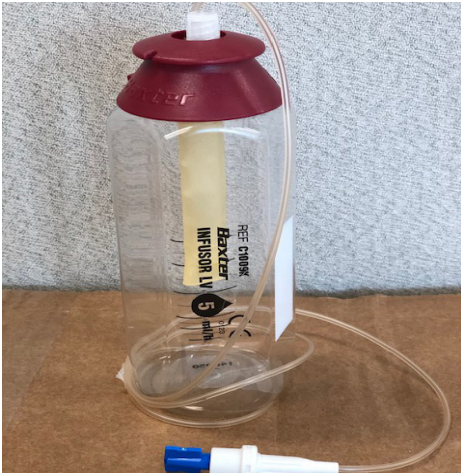


Disconnecting Your Elastomeric Infusor™ from your PORT



Elastomeric Infusor

The Elastomeric Infusor™ which is sometimes called “baby bottle” contains a type of chemotherapy called fluorouracil or 5FU for short.

This medication is cytotoxic (destroys cells in our body). Please refer to Safe Management of Chemotherapy in the Home (located in your spill kit) for more information on keeping yourself safe.

It is possible to flush your PORT but you may wish to have a family member or friend do this for you. It is recommended that the same family member or friend help you with all your infusor disconnections.

Follow the instructions below to safely disconnect the elastomeric infusor and flush your PORT.



PORT A CATH

Treatment location: _____

Name and phone number of cancer doctor and nurse: _____

Length of time Elastomeric Infusor™ will be connected: _____

When to disconnect your Infusor™ pump



At your connection appointment, your nurse will tell you the date and time your infusion is expected to be finished.

You know your infusor is finished when the balloon is empty (deflated). For more information please see your ***Patient Guide: Baxter Elastomeric Devices*** booklet. This booklet is located in your spill kit.

The pump is empty when the balloon is deflated

Getting ready to disconnect the pump



Pick a work area in your house or personal space (kitchen table or bathroom counter) and clean area with soap and water or disinfecting wipes.

Wash your hands with soap and water for at least 20 seconds (including your palms, back of each hand, between fingers, thumbs and under nails) and dry your hands using a clean towel.

You can also clean your hands with an alcohol-based hand sanitizer instead of soap. Rub your hands together for at least 20 seconds and let them completely dry..

Gather supplies from your disconnection kit



- 2 - Blue plastic-backed pad (If only 1 blue plastic-backed pad is available, use a clean hand towel to lay out your disconnect supplies). The blue plastic-backed pad is to be used when disconnecting and flushing the line.
- 1 - pair nitrile chemotherapy-resistant gloves
- 4 - Alcohol swabs
- 2 - 10 mL pre-filled Normal Saline syringe
- 1 pre-filled heparin 100 units/ml syringe
- 1 - spare “dead end” cap to be placed on elastomeric infusor if blue wingtip cap is not taped to the bottom of elastomeric Infusor
- Gauze and Band-Aid®
- 1 - Medium-sized zip sealable plastic chemotherapy bag

Preparing your disconnect work area

1. Unfold the blue pad with the plastic side down on your work area and set up your supplies (use a clean towel if only 1 blue pad available in disconnection kit). This includes taking normal saline and heparin syringes out of the packaging.
2. Open the plastic bag that your **used** infusor, blue pads, alcohol swabs, and normal saline and syringes will be put into.
3. Put on your protective nitrile chemotherapy gloves.

Disconnecting the bottle



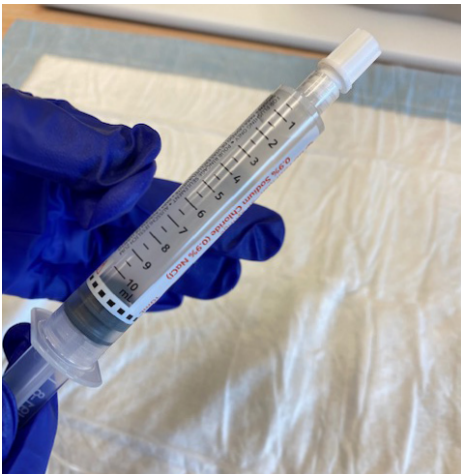
1. Remove the blue-winged cap from the bottom of your bottle and place it on your blue pad with the other supplies. If the blue-winged tip cap is not taped to the bottom of the elastomeric pump use the “dead end” cap that is located in your disconnection kit.
2. Carefully remove tape that is holding the elastomeric infusor tubing onto your skin. **DO NOT REMOVE THE DRESSING COVERING YOUR PORT.**
3. Place the second blue pad under the connection between the elastomeric infusor and the PORT (this would be on your chest).
4. Hold the gauze under the connection (in case there are any drops) and unscrew the white end on the elastomeric infusor from the end of your PORT line.
5. Screw the blue-winged cap (or “dead end” cap if the blue cap is not taped to the bottom of the elastomeric pump) onto the end of the elastomeric infusor tubing. This will prevent any droplets of chemotherapy from leaking out.
6. Place the elastomeric infusor and used gauze back onto the blue pad (towel) away from your clean supplies.



Flushing your PORT



1. Open 2 alcohol pads and clean the clear cap for 30 seconds and let it dry (do not blow on the area to speed drying).
2. Pick up the normal saline syringe with the tip facing up.
3. Tap the syringe with your finger until the air bubbles go to the top.
4. Remove the normal saline syringe cap and slowly push on the plunger until all the air bubbles are removed. A small amount of normal saline may come out of the tip of the syringe.
5. Do not touch the tip of the syringe to anything (cloths, table, etc.) or it will become contaminated.
6. If the tip does touch anything re-clean with the two alcohol swabs.
7. Attach the saline syringe to the injection cap. This is done by pushing the end of the syringe into the injection cap and twisting the syringe clockwise. Once the flush is complete, remove the empty syringe by twisting counter-clockwise.





8. Repeat step 4 with the second saline syringe and then the heparin syringe (Remove the normal saline syringe cap and slowly push on the plunger until all the air bubbles are removed).
9. Push in 20 mL (2 x 10 mL normal saline syringe) using a push / pause method.
10. Push in heparin from pre filled syringe - HEPARIN SHOULD BE INJECTED AFTER NORMAL SALINE.
11. **IF YOU CANNOT PUSH THE SALINE OR HEPARIN IN EASILY, DO NOT FORCE IT**
 - Check to ensure that syringe is twisted on correctly (connection between syringe and PORT should appear straight).
 - If the connection is OK and there is still resistance remove the syringe and call your Cancer Team (numbers listed on 1st page)
12. Place the used syringes on your blue pad.
13. Carefully remove dressing covering your PORT.
14. With two fingers supporting the base of the PORT use your other hand to pull the needle back until you hear a **CLICK**. The click means the needle is fully removed into its safety feature.



15. Wrap everything in the blue pad and place it in a clear plastic chemotherapy bag.
16. Bring the plastic bag containing your disconnected elastomeric pump and used supplies back to the Cancer Centre on your next visit for disposal. **DO NOT DISCARD IN THE GARBAGE.**

