

Provincial Cancer Care Conference 2023

Connect · Learn · Share



Program Agenda

Working together to advance cancer care

October 12-13, 2023

Canad Inns Destination Centre Polo Park

Focus: Lymphoproliferative (Lymphoma & Multiple Myeloma)



For more information and updates, please visit:
cancercare.mb.ca/conference

Provincial Cancer Care Conference 2023

Connect • Learn • Share

Agenda

Thursday, October 12, 2023

11:15	Registration Desk Opens and Light Refreshments (Prefunction Foyer)
INTERACTIVE CONFERENCE WORKSHOP (Ambassador 1-3)	
12:15	Welcome Remarks, Introductions, and Opening Prayer
12:30	Trauma-Informed Care Jocelyne Lalonde, BA (Hons), M.Sc, IPHE, Consultant - CTRI
13:55	<i>Nutrition Break and Display Exhibition</i>
14:15	Practicing Trauma-Informed Care: An Interactive Skill-Building Workshop Allison Wiens, BN, RN, MPH, Education & Liaison Nurse - Health Equity CancerCare Manitoba Irene Maendel, MA-C, RSW, CCC, Psychosocial Oncology Clinician, Southern Health Santé Sud
15:45	Concluding Remarks and Evaluation
17:00	COCKTAIL RECEPTION & RESEARCH POSTER EXHIBITION (Prefunction Foyer & Ambassador 1-3)
18:00	DINNER & KEYNOTE ADDRESS (Ambassador 1-3)
19:30	How Understanding the Psychology of How We Think Can Remove Barriers to Inclusion & Equity Dr. Rehman Abdulrehman, Ph.D, C.Psych., Clinical and Consulting Psychologist
20:20	<i>Questions and Discussion</i>

Friday, October 13, 2023

06:30	Registration Desk Opens and Breakfast (Prefunction Foyer & Ambassador 1-3)
07:20	Welcome Remarks and Introductions (Ambassador 1-3)
LYMPHOPROLIFERATIVE SESSION (Ambassador 1-3)	
07:30	Lymphoma Work-Up and Overview Dr. Catherine Moltzan, BMS, MD, MS, FRCPC, FACP, Hematologist, CancerCare Manitoba
07:55	Systemic Therapies for Lymphoma: Review and Updates Dr. Pam Skrabek, MD, Hematologist, Department of Internal Medicine, Max Rady College of Medicine
08:20	Breaking Down Tumour Lysis Dr. Mark Kristjanson, MD, CCFP, Clinician - Urgent Cancer Care
08:40	<i>Shared Questions and Discussion</i>
08:55	<i>Nutrition Break and Display Exhibition</i>
09:25	A PEP Talk on Myeloma Dr. Leonard Minuk, MD, FRCPC, Hematologist, CancerCare Manitoba
09:50	Multiple Myeloma Treatments Refresher Dr. Emily Rimmer, MD, FRCPC, Hematologist, CancerCare Manitoba
10:15	Pain and Symptom Management for Multiple Myeloma Dr. Cornelius Woelk, MD, CCFP(PC), FCFP, Community Cancer Program, Boundary Trails Health Centre

10:40	<i>Shared Questions and Discussion</i>			
10:55	<i>Stretch Break</i>			
ONCOFERTILITY PLENARY (Ambassador 1-3)				
11:05	Oncofertility: Caring for Your Patients Mackenzie Jansen, RN, BN, MN (C), Clinical Nurse Specialist - Adolescent & Young Adult Program, CancerCare Manitoba Ian Scott, MSW, RSW, AYA Psychosocial Clinician, CancerCare Manitoba			
11:30	<i>Questions and Discussion</i>			
INDIGENOUS COMMUNITY HEALTH PLENARY (Ambassador 1-3)				
11:35	Increasing Awareness about Colorectal Cancer Screening using Creative Strategies: The Giant Inflatable Colon Project Tracy Abraham, Director Health Services, Rural Acute Care, Renal Program, CancerCare and Cancer Navigation Services, Interlake-Eastern Regional Health Authority Crystal Behrends, Community Engagement Liaison, Cancer Navigation Services, Interlake-Eastern Regional Health Authority			
12:05	<i>Questions and Discussion</i>			
12:10	LUNCH (Ambassador 1-3)		FPO LUNCH (Meeting Room M)	
13:05	Arrival to Breakout Rooms			
INTERACTIVE BREAKOUT SESSIONS				
	Ambassador 1-2	Ambassador 3	Meeting Room K	Meeting Room L
13:10	Hypersensitivity at CancerCare: What's New? Dr. Karver Zaborniak, MD, FRCPC, Allergy/Immunology Physician, University of Manitoba Jodi Hyman, RN, BScN, CON (C), Nurse Educator, Systemic Therapy Program, CancerCare Manitoba	New Drugs for Breast Cancer Dr. Marshall Pitz, MD MHS FRCPC, Medical Oncologist, CancerCare Manitoba/University of Manitoba	Antibody Drug Conjugates Blair Einarson, B.Sc. Pharm, Pharmacist, Provincial Oncology Drug Program, CancerCare Manitoba	Treating the Whole Person Dr. Debbie Whitney, C. Psych., Psychologist, Private Practice
13:40	Arrival to Breakout Rooms			
13:45	Hazardous vs. Non-Hazardous Drugs Theresa Whiteside, RN, BN, CON (C), Clinical Resource Nurse, Systemic Therapy & Urgent Cancer Care at MacCharles, CancerCare Manitoba Dana Augst, RN, BN, Nurse Educator of Outpatient Clinic Service Program, CancerCare Manitoba	Novel Therapies in Lung Cancers Dr. Rebekah Rittberg, MD, FRCPC, Medical Oncologist, CancerCare Manitoba	On the Horizon: Emerging Drugs and Indications for Cancer Care Danica Wasney, B.Sc. Pharm., ACPR BCOP, Clinical Pharmacist, Provincial Oncology Drug Program, CancerCare Manitoba	Mindfulness Based Stress Reduction: A Group Intervention for Cancer Patients and Their Families Dr. Debbie Whitney, C. Psych., Psychologist, Private Practice & Kimberly Proch, BSW, RSW, Psychosocial Oncology Clinician, CancerCare Manitoba
14:15	<i>Nutrition Break and Display Exhibition</i>			

RESEARCH PLENARY (Ambassador 1-3)

14:35	Chimeric Antigen Receptor-T (CAR-T) Cells Dr. David Szwajcer, MD, MSC, Medical Director, Cell Therapy Laboratory, CancerCare Manitoba Dr. Yale Michaels, PhD, Scientist, Paul Albrechtsen Research Institute CancerCare Manitoba
15:00	<i>Questions and Discussion</i>
15:05	<i>Stretch Break</i>

SHORT SNAPPERS (Ambassador 1-3)

15:10	CAR T-cell Therapy: coming soon to a province near you! Dr. Chantalle Menard, MD, MSc, Hematologist, CancerCare Manitoba
15:25	Hepatitis B Reactivation during Cancer therapy: Risk and Preventive Strategies Dr. Pam Skrabek, MD, Hematologist, Department of Internal Medicine, Max Rady College of Medicine
15:40	Cancer Surgery Quality in Manitoba Dr. Pamela Hebbard, MD, FRCSC, Head, Surgical Oncology, CancerCare Manitoba
15:55	<i>Shared Questions and Discussion</i>
16:05	Concluding Remarks, Evaluations, and Closing Prayer

Agenda subject to change.

Notes:

Message from the President and CEO of CancerCare Manitoba



On behalf of CancerCare Manitoba, welcome to the Provincial Cancer Care Conference 2023 with the theme “Working together to advance cancer care.”

CancerCare Manitoba, as the provincial cancer authority, has the mandate to plan and deliver cancer services throughout our province. This is only achieved through collaboration with all Regions, healthcare providers, Indigenous and other partners and communities in Manitoba.

Our commitment to patient- and community-focused care depends on strong community engagement. This conference is an excellent opportunity for us to collaborate and engage with you as critical health partners who share in the care of Manitobans with cancer.

Through our engagement with you as well as patients, families, and their communities, including Indigenous and newcomer communities, we learn about the unique needs of individuals and the communities they belong to and are better able to respond to their needs. This informs the care we provide. Our engagement with all Manitobans is valued and vital.

This year, we have been so grateful for the gift of \$27 million from the Paul Albrechtsen Foundation towards research at CCMB and a Centre for Hope at the Western Manitoba Cancer Centre in Brandon. The impact of this generous gift will be felt for many decades in research and the lives of Manitobans with cancer. Research and innovation are foundational to the care we provide, as are the patient support programs provided through CCMB’s Centres for Hope and our Hope and Healing Program. We are excited about this new Centre in Brandon and what it will provide for patients in the Prairie Mountain Region.

This fall, we have continued our commitment towards a culture of EDI at CancerCare Manitoba by supporting staff with group coaching and consultation sessions with Dr. Rehman Abdulrehman focusing on EDI, a sense of belonging, bias and racism. Staff have appreciated these sessions, and I know we will enjoy hearing from Dr. Abdulrehman as the keynote speaker on the evening of October 12th presenting, “How Understanding the Psychology of How We Think Can Remove Barriers to Inclusion and Equity”.

I really appreciate that our young researchers will share their research during the evening of October 12th, giving you a small peek into research at the Paul Albrechtsen Research Institute CancerCare Manitoba.

This year's conference provides a wide array of opportunities to learn and connect with colleagues. I extend gratitude to our CCMB team for preparing a robust educational event which will be beneficial for all of us. I also extend gratitude to our Foundation for supporting this conference.

And I thank all participants for taking the time to attend this conference. We hope each one of you will feel a sense of belonging to the cancer community, that your relationships will be strengthened and new connections will be made.

We know we can count on you to join us in supporting Manitobans with cancer. Together, we can provide the best cancer services to Manitobans.

Kind regards,

Dr. Sri Navaratnam, President and CEO, CancerCare Manitoba
Professor, Department of Internal Medicine, Rady Faculty of Health Sciences,
University of Manitoba

As a CancerCare Manitoba employee, the work you do every day makes a difference for all people in this province on a cancer journey.



There are many staff that choose to also help those touched by cancer by donating to CancerCare Manitoba Foundation.

Will you join them?

CancerCare Manitoba is supported by Manitoba Health, however some programs and services are not eligible for government funding. Donor contributions including your payroll donations to the Foundation make a significant difference for Manitobans facing a cancer diagnosis.



Your donation will:

- Help advance local research leading to the best available treatments for patients.
- Support prevention, risk reduction and screening public education programs.
- Create more access to support programs for Manitobans with cancer and their families.

Payroll deduction is a great way to support

CancerCare Manitoba Foundation with ease. For example, a \$5 donation on each payroll equals an annual gift of \$130. Your donation will be reflected on your T4, making it easier during tax season.

How to participate:

1. Visit cancercarefdn.mb.ca/workplace-giving to register.
2. Questions? Please reach out to Sharon at sloewen16@cancercare.mb.ca or **204-784-2797**



 **CancerCare Manitoba
FOUNDATION**

All funds raised stay in Manitoba.

Thursday, October 12, 2023

Workshop Trauma-Informed Care

Facilitator



Jocelyne Lalonde, BA (Hons), MSc, IPHE
Consultant - CTRI

Learning Objectives

At the end of the session, participants will be able to:

1. Discuss the prevalence and impact of trauma on individuals and families experiencing a cancer diagnosis.
2. List five key trauma-informed principles.
3. Describe practical strategies for implementing each trauma-informed principles and how this will fit into a framework for working with patients and families.
4. Refer to examples and evidence that demonstrate why approaching work with the person with cancer and their families through a trauma-informed lens is beneficial.

Biographical Sketch

Jocelyne is a Certified Motivational Interviewer with a Master's degree in Family Social Science, an Honours Bachelor's degree in Sociology, and a proud franco-manitobaine. She has over 15 years of experience working with youth, families, and adults in community, health, and school settings. Jocelyne's expertise and passion center around trauma, addiction, other mental health concerns, and wellness. Most recently, she has enjoyed teaching at the post-secondary level, where her research has focused on the experiences of youth in and from the child welfare system.

As an enthusiastic lifelong learner, Jocelyne meaningfully acknowledges that there are many valuable ways of understanding ourselves and the world around us. She believes in the importance of walking respectfully alongside others and taking a strength-based approach to providing support that focuses on each person's innate ability to create a more peaceful life. Jocelyne is passionate about creating genuine connections with others and believes that this is the first step to a better life and, ultimately, to a better world.

Workshop

Practicing Trauma-Informed Care: An interactive Skill-Building Workshop

Facilitators



Allison Wiens, BN, RN, MPH
Education & Liaison Nurse - Health Equity, CancerCare Manitoba



Irene Maendel, MA-C, RSW, CCC
Psychosocial Oncology Clinician, Southern Health Santé Sud

Learning Objectives

At the end of the session, participants will be able to:

1. Describe how to identify trauma and different ways to ask about trauma.
2. Identify barriers to trauma-informed care and ways to mitigate them.
3. Discuss ways to improve trauma-informed care in the various cancer care settings.

Biographical Sketch

Allison began oncology nursing in 2008 with various roles. She has the privilege of working as the Education and liaison Nurse – Health Equity with the Underserved Populations Program at CancerCare Manitoba. Allison completed her Master of Public Health from the University of Manitoba in early 2023, where she focused on implementing health equity frameworks to advance health equity. Allison’s education and ongoing work focus on enhancing equity in the cancer system.

Irene is a culturally attuned, trauma-informed therapist specializing in CBT, DBT, Mindfulness Practice and EMDR. Irene has worked as a therapist with Cancer Navigation Services in the Southern health region for almost a decade and has many years of experience in cancer care and grief support. Her integrative and holistic approach provides care for the mind, body and soul as she journeys with clients toward hope, healing and resilience.

Keynote

How Understanding the Psychology of How We Think Can Remove Barriers to Inclusion & Equity

Presenter



Dr. Rehman Abdulrehman, Ph. D, C. Psych.
Clinical and Consulting Psychologist

Learning Objectives

At the end of the session, participants will be able to:

1. Understand a cognitive behavioural model of human experience and change.
2. Understand how our surroundings influence bias and ultimately racist marginalizing behavior.
3. Understand the consequences of bias on mental health.
4. Begin to identify personal steps to resolving issues that create barriers to inclusion.

Biographical Sketch

A clinical & consulting psychologist, **Dr. Abdulrehman** applies his skills of creating sustainable change to leadership and diversity, equity and inclusion. He has a broad and international portfolio of clients, such as Google, YouTube, MasterCard Foundation, and Canadian Broadcasting Corporation, and was a member of the Conference Board of Canada. He hosts a podcast on the difficult conversations of racism called Different People.

Dr. Abdulrehman's work has been recognized by the Society of Consulting Psychology for Excellence in Diversity and Inclusion (D&I) Consulting. A TEDx speaker on "Resolving Unconscious Bias" and the founder of tesbias.com and livingwithracism.com, he believes insight into our biases can be the beginning of a resolution to systemic racism. He is an assistant professor with the Department of Clinical Health Psychology at the University of Manitoba and has held three visiting professor positions at Zanzibar University, the State University of Zanzibar and the Muhimbili University of Health and Allied Sciences due to development work in Tanzania.

He is also the author of a new book in press titled *Developing Anti-Racist Cultural Competence*, out in early 2024.

Friday, October 13, 2023

Lymphoproliferative Session Lymphoma Work-Up and Overview

Presenter



Dr. Catherine Moltzan, BMS, MD, MS, FRCPC, FACP
Hematologist, CancerCare Manitoba

Learning Objectives

At the end of the session, participants will be able to:

1. State when the diagnosis of lymphoma should be suspected.
2. Identify diagnosis and staging of lymphomas.
3. Summarize the classification of lymphomas.

Biographical Sketch

Dr. Moltzan is a Hematologist at CancerCare Manitoba and an Associate Professor at Rady Faculty of Health Sciences University of Manitoba. Clinical interests include lymphoproliferative disorders and general hematology. She is a member of the Peer Executive Review Committee (pERC) of the pan Canadian Oncology Review (pCODR) at Canada's Drug and Health Technology Agency (CADTH), and she is the Medical Advisor for Quality and Patient Safety at CancerCare Manitoba.

Lymphoproliferative Session

Systemic Therapies for Lymphoma: Review and Updates

Presenter



Dr. Pam Skrabek, MD
Hematologist, Department of Internal Medicine, Max Rady College
of Medicine

Learning Objectives

At the end of the session, participants will be able to:

1. Identify common therapies in Hodgkin and Non-Hodgkin lymphoma.
2. Discuss indications for Bruton Tyrosine Kinase inhibitors and give an overview of novel BTKi.
3. List different types of antibodies used in lymphoma and explain how bispecific antibodies work.

Biographical Sketch

Dr. Skrabek is a Hematologist and Associate Professor in the Section of Hematology and Medical Oncology in Winnipeg with a Master's in Community Health Sciences. Her position is dedicated to clinical work focusing on lymphomas, including a leadership role as chair of the Lymphoproliferative Disease Site Group for CancerCare Manitoba.

Lymphoproliferative Session Breaking Down Tumour Lysis

Presenter



Dr. Mark Kristjanson, MD, CCFP
Clinician, Urgent Cancer Care, CancerCare Manitoba

Learning Objectives

At the end of the session, participants will be able to:

1. Define the tumour lysis syndrome with reference to the Bishop-Cairo criteria.
2. Describe those clinical circumstances posing a high risk for tumour lysis concerning tumour histology, biology and patient comorbidities.
3. Explain the approach to prevention and treatment for tumour lysis.

Biographical Sketch

Mark is a family physician working part-time in CancerCare Manitoba's Urgent Cancer Care clinic. Dr. Kristjanson is the attending physician at Jocelyn House Hospice; he also rounds weekly at St. Amant's Health and Transition Services, where he attends a ward of severely to profoundly disabled adults.

Dr. Kristjanson served as Medical Lead for Primary Care in CCMB's Community Oncology Program from October 2013 until May 31, 2022. He and his better half, Sangita, have three grown children (Tejal, Jodi and Spencer), a son-in-law (Brady) and a grandson, Bennett.

Lymphoproliferative Session A PEP Talk on Myeloma

Presenter



Dr. Leonard Minuk, MD, FRCPC
Hematologist, CancerCare Manitoba

Learning Objectives

At the end of the session, participants will be able to:

1. Identify the indications for SPEP/FLC testing.
2. How to interpret SPEP/FLC and follow up of monoclonal protein.
3. Recognize the diagnosis of multiple myeloma.

Biographical Sketch

Dr. Minuk graduated from the University of Manitoba Medical School in 2004 and obtained residency training in Internal Medicine and subspecialty training in Hematology at the University of Western Ontario. He worked as a clinical hematologist at the London Health Sciences Centre from 2009 to 2016 and was an associate professor of medicine at the University of Western Ontario.

Dr. Minuk moved back to Winnipeg in 2016 and is currently a clinical hematologist at CancerCare Manitoba and an associate professor at Max Rady College of Medicine at the University of Manitoba. His clinical practice and research interests include plasma cell disorders and lymphoma. He is the head of the Section of Hematology/Oncology through the Department of Internal Medicine and the head of the Department of Medical Oncology and Hematology at CancerCare Manitoba.

Lymphoproliferative Session Multiple Myeloma Treatments Refresher

Presenter



Dr. Emily Rimmer, MD, MSc, FRCPC
Hematologist, CancerCare Manitoba

Learning Objectives

At the end of the session, participants will be able to:

1. Explain the standard treatment options for transplant-eligible and non-transplant-eligible myeloma.
2. State the common side effects and toxicities of treatments.
3. Recognize the need for prophylactic treatments associated with different treatment regimens.
4. Discuss new and emerging treatment options.

Biographical Sketch

Dr. Rimmer is a hematologist at CancerCare Manitoba. She completed medical school and internal medicine at the University of Manitoba and a Master of Science in Community Health Sciences.

She is a member of the hematology and myeloma DSGs. She is the principal investigator of a national pilot study of plasmapheresis in septic shock.

Lymphoproliferative Session

Pain and Symptom Management for Multiple Myeloma

Presenter



Dr. Cornelius Woelk, MD, CCFP(PC), FCFP
Community Cancer Program, Boundary Trails Health Centre

Learning Objectives

At the end of the session, participants will be able to:

1. Recognize the importance that symptom management plays throughout the course of a multiple myeloma illness.
2. Describe three common effects of multiple myeloma and their associated symptoms.
3. Anticipate and manage common symptoms caused by multiple myeloma.

Biographical Sketch

Dr. Woelk has been involved in the provision of cancer care since 1988 and became involved in Palliative Care in 1990. In 1998, he completed a Palliative Care Fellowship in London, Ontario, and then became the medical director of palliative care, first for Central Manitoba Regional Health Authority and now for Southern Health-Santé Sud.

Cornelius is a member of the “Ask A Professional” team of the Canadian Virtual Hospice, a Pallium educator, and a co-chair of Shared Health’s Cancer and Palliative Care Provincial Clinical Team. He has won several awards for his work and divides most of his time between Palliative Care and oncology care through the Community Cancer Program at Boundary Trails Health Centre.

He is married to Viola, and they enjoy time with their three adult children and their spouses, as well as time travelling and relaxing at their cabin in Manitoba’s Whiteshell Park.

Oncofertility Plenary

Oncofertility: Caring for Your Patients

Presenters



Mackenzie Jansen, RN, BN, MN (c)
Clinical Nurse Specialist - Adolescent & Young Adult Program,
CancerCare Manitoba



Ian Scott, MSW, RSW
AYA Psychosocial Oncology Clinician

Learning Objectives

At the end of the session, participants will be able to:

1. Identify significant impacts of cancer treatments on fertility and recognize the importance of early intervention through fertility preservation.
2. Identify and differentiate between various fertility preservation methods available for cancer patients, barriers to accessing FP, and solutions.
3. Initiate discussions about fertility in a timely manner and gain insight into patient concerns that are sometimes left unspoken.

Biographical Sketch

Mackenzie has been a dedicated nurse since 2006 and is a Clinical Nurse Specialist for the Adolescent and Young Adult Program at CCMB. Mackenzie is part of a multidisciplinary team that provides specialized support to young cancer patients. Additionally, Mackenzie is collaborating with her team on an oncofertility initiative, improving access to timely fertility and fertility-related resources, developing clinical pathways, and providing educational resources for patients and healthcare providers. She is also in her final year of a Master's in Nursing program at the University of Calgary.

Ian is a social worker and the Adolescent and Young Adult Psychosocial Clinician at CCMB. He obtained his BSW (Hons) from Lakehead University and his MSW from the University of Victoria. Ian provides counselling to young adults with cancer and their supporters. He also facilitates the monthly young adult cancer support group and is involved in different initiatives to improve care for young adults. Ian also facilitates a support group with the Leukemia & Lymphoma Society of Canada for patients from the prairie provinces. He is a regular guest speaker with several community groups, including Young Adult Cancer Canada (YACC), and is a proud member of the Health Equity Collaborative at CCMB.

Indigenous Community Health Plenary Increasing Awareness about Colorectal Cancer Screening using Creative Strategies: The Giant Inflatable Colon Project

Presenters



Tracy Abraham
Director Health Services, Rural Acute Care, Renal Program,
CancerCare and Cancer Navigation Services, Interlake-Eastern
Regional Health Authority



Crystal Behrends
Community Engagement Liaison, Cancer Navigation Services,
Interlake-Eastern Regional Health Authority

Learning Objectives

At the end of the session, participants will be able to:

1. Recognize the importance that symptom management plays throughout the course of a multiple myeloma illness.
2. Describe three common effects of multiple myeloma and their associated symptoms.
3. Anticipate and manage common symptoms caused by multiple myeloma.

Biographical Sketch

Tracy is the Director of Health Services, Rural Acute Care, Renal Program, and Cancer Navigation Services for the Interlake-Eastern Health Authority. The Cancer Services portfolio has provided an incredible experience where Tracy has had the opportunity to help increase access to services and resources for rural communities while promoting cancer awareness and screening in our region, including our First Nation communities. Tracy has participated in the Cancer Screening Working Group alongside partners from CancerCare Manitoba, Interlake Reserve Tribal Council, Southeast Resource Development Council, including independent communities including Berens River, Sagkeeng, Lake St. Martin, and Fisher River; this is where the development of the Inflatable Giant Colon Project came to fruition, through an Expression of Interest submitted to the Canadian Partnership against Cancer.

Crystal joined the IERHA Cancer Navigation Team in June of 2022. She has had the opportunity to visit many communities and attend events throughout the region, promoting cancer awareness and the importance of regular screening. Her office is in the Pine Falls Health Complex and works primarily on the East side of the Interlake-Eastern Region.

Breakout Hypersensitivity at CancerCare: What's New?

Presenters



Dr. Karver Zaborniak, MD, FRCPC
Allergy/Immunology Physician, University of Manitoba



Jodi Hyman, RN, BScN, CON (C)
Nurse Educator, Systemic Therapy Program, CancerCare Manitoba

Learning Objectives

At the end of the session, participants will be able to:

1. Identify the fundamentals of allergic and infusion-related reactions.
2. Discuss the recently implemented hypersensitivity protocols at CCMB.
3. Consolidate and apply this knowledge to select patient scenarios.

Biographical Sketch

Dr. Zaborniak is an Allergist and Clinical Immunologist at the University of Manitoba, where he also completed his training. Dr. Zaborniak's interest is in Drug Hypersensitivity, and he has been the primary Allergist at the new CancerCare Allergy clinic since its creation.

Jodi graduated with a Diploma in Nursing in 1994 and her BSc in Cancer Nursing in 2001. She has enjoyed working in Hematology/BMT and Oncology for the past 28 years nationally and internationally in England, Australia and Manitoba. She was the recipient of the 2013 Boehringer Ingelheim Oncology Nurse of the Year Award and the 2008 Award for Clinical Excellence – South Eastern Sydney, Illawarra Health – New South Wales, Australia.

She has been employed at CCMB since her return to Canada in 2008 and has been working as the Nurse Educator for the Community Oncology Program for the past eight years. Jodi enjoys cooking, hiking and hanging out with her family and two dogs.

Breakout Hazardous vs Non-Hazardous Drugs

Presenters



Theresa Whiteside, RN, BN, CON(C)
Clinical Resource Nurse for Systemic Therapy and Urgent Cancer
Care at MacCharles Site, CancerCare Manitoba



Dana Augst, RN, BN
Nurse Educator of Outpatient Clinic Service Program

Learning Objectives

At the end of the session, participants will be able to:

1. Identify the difference between hazardous and non-hazardous drugs.
2. Discuss safe handling precautions to minimize occupational risk.
3. Teach appropriate patient education related to hazardous and non-hazardous safety precautions.

Biographical Sketch

Theresa began her Nursing career at MacCharles in June of 1991 as a casual float nurse for the Med/Rad Oncology clinics. As her experience in oncology nursing grew, Theresa had the opportunity to work in the chemotherapy treatment room. In November 2009, Theresa took the role of CRN.

Dana started as a staff nurse on CK5, the pediatric inpatient unit for Oncology, Hematology and Bone Marrow Transplant from July 2001 to April 2022. She then moved into a Nurse Educator role in Child Health. The opportunity to fuse her passions of oncology nursing and educating nurses brought Dana to CCMB as a Nurse Educator in December 2022.

Breakout New Drugs for Breast Cancer

Presenter



Dr. Marshall Pitz, MD, MHS, FRCPC
Medical Oncologist, CancerCare Manitoba and University of
Manitoba

Learning Objectives

At the end of the session, participants will be able to:

1. Identify current treatment pathways and medications for breast cancer.
2. Differentiate recently approved breast cancer treatments from existing treatments in the context of treatment algorithms.
3. Recognize the expected potential benefits of recently approved breast cancer treatments.

Biographical Sketch

Dr. Pitz is a Medical Oncologist at CancerCare Manitoba and an Associate Professor of Medicine at the Rady Faculty of Health Sciences, University of Manitoba. He provides care to patients in the Breast and CNS Disease Site Groups. His research interests include clinical trials, primarily as Co-Chair of the Brain Disease Site Committee at the Canadian Cancer Trials Group and in clinical informatics as an Affiliate Scientist at the Paul Albrechtsen Research Institute, CancerCare Manitoba.

Breakout New Drugs for Breast Cancer

Presenter



Dr. Rebekah Rittberg, MD, FRCPC
Medical Oncologist, CancerCare Manitoba

Learning Objectives

At the end of the session, participants will be able to:

1. Gain knowledge of new therapies used in lung cancer patients.
2. Recognize the increasing use of therapies in early-stage lung cancer.
3. Understand treatment toxicities.

Biographical Sketch

Dr. Rittberg is a Medical Oncologist at CancerCare Manitoba with a clinical focus on patients with cutaneous malignancies and thoracic malignancies. She completed her undergraduate medical degree at the University of Manitoba, as well as residencies in internal medicine and medical oncology at the University of Manitoba. Following residency, she completed a fellowship in Thoracic Oncology at BC Cancer in Vancouver.

Breakout Antibody Drug Conjugates

Facilitator



Blair Einarson, B.Sc. Pharm
Pharmacist, Provincial Oncology Drug Program, CancerCare
Manitoba

Learning Objectives

At the end of the session, participants will be able to:

1. Classify the three structural components of an antibody-drug conjugate (ADC).
2. Identify antibody-drug conjugates used as systemic therapy at CancerCare Manitoba.
3. List common toxicities associated with ADC treatment.

Biographical Sketch

Blair completed a B.Sc. Pharm at the University of Manitoba in 2012. Blair joined CancerCare Manitoba Pharmacy in 2014 and was a clinic pharmacist in the Genitourinary and Brain Tumour disease site groups for seven years. In 2021, Blair accepted a position within the Provincial Oncology Drug Program, with a focus on treatments available through manufacturer access programs and Health Canada's Special Access Program (SAP).

Breakout

On the Horizon: Emerging Drugs and Indications for Cancer Care

Presenter



Danica Wasney, B.Sc.Pharm., ACPR, BCOP
Clinical Pharmacist, Provincial Oncology Drug Program

Learning Objectives

At the end of the session, participants will be able to:

1. Recognize at least three new indications for use and/or combinations of systemic therapies already listed on the PODP Formulary.
2. Name at least three new drugs anticipated for addition to the PODP Formulary in 2023/24.
3. Identify a place in therapy for new indications/drugs using the PODP Funding Algorithms.

Biographical Sketch

Danica is a clinical pharmacist at CCMB, where she has worked for over 20 years. Provincially, she is involved in the implementation of emerging systemic therapies in oncology-hematology as a member of the Provincial Oncology Drug Program (PODP) and as Chair of the CCMB Formulary Management Team. She maintains the PODP Formulary on SharePoint and works extensively on the provincial Compounded Sterile Preparation Protocols database.

On a national level, she represents Manitoba on the pan-Canadian Oncology Drug Review (pCODR) Provincial Advisory Group at the Canadian Agency for Drugs and Technologies in Health (CADTH). She is also a past member of the pCODR Expert Review Committee (pERC) at CADTH.

She graduated from the Faculty of Pharmacy at the University of Manitoba and completed an Accredited Hospital Pharmacy Residency at The Ottawa Hospital. Since 2005, she is a Board-Certified Oncology Pharmacist with the Board of Pharmaceutical Specialties.

Breakout

Treating the Whole Person

Presenter



Dr. Debbie Whitney, C. Psych.
Psychologist, Private Practice

Learning Objectives

At the end of the session, participants will be able to:

1. Reflect on circumstances that can bias clinicians to focus on only a limited aspect of the patient's experience.
2. Recognize how a conceptual framework (several examples presented) can assist us in seeing the larger context.
3. Identify some simple techniques for pausing and rebalancing in stressful moments.

Biographical Sketch

Debbie has a doctorate in clinical psychology from the University of Saskatchewan and was an Assistant Professor in the Department of Clinical Health Psychology within the Rady School of Medicine at the University of Manitoba until retiring in 2020. She completed training to facilitate Mindfulness-Based Stress Reduction through Brown University and has led an adapted group for CancerCare Manitoba for the past two years.

Breakout

Mindfulness Based Stress Reduction: A Group Intervention for Cancer Patients and Their Families

Presenters



Dr. Debbie Whitney, C. Psych.
Psychologist, Private Practice



Kimberly Proch, BSW, RSW
Psychosocial Oncology Clinician, CancerCare Manitoba

Learning Objectives

At the end of the session, participants will be able to:

1. Identify the structure/contents of an 8-week Mindfulness-Based Stress Reduction (MBSR) Program for cancer patients and families.
2. Identify recent research on the effectiveness of MBSR for symptom reduction.
3. Recognize how the practice of mindfulness can support clinician resilience.

Biographical Sketch

Debbie has a doctorate in clinical psychology from the University of Saskatchewan and was an Assistant Professor in the Department of Clinical Health Psychology within the Rady School of Medicine at the University of Manitoba until retiring in 2020. She completed training to facilitate Mindfulness-Based Stress Reduction through Brown University and has led an adapted group for CancerCare Manitoba for the past two years.

Kimberly is a Psychosocial Oncology Clinician who has been serving patients and families at CCMB since joining the team in 2021. Kimberly holds a bachelor's degree in social work and is presently working on completing her master's degree. Prior to joining CancerCare Kimberly spent several years supporting patients in various community mental health and psychiatric programs. Kimberly is passionate about providing person-centered equitable care to patients and families.

Kimberly has joined Dr. Debbie Whitney as a regular co-facilitator of the 8-week Mindfulness Practice program for cancer patients and family members, which is currently running as a group intervention through Patient and Family Support Services.

Research Plenary Chimeric Antigen Receptor-T (CAR-T) Cells

Presenters



Dr. David Szwajcer, MD, MSC
Medical Director, Cell Therapy Laboratory, CancerCare Manitoba



Dr. Yale Michaels, PhD
Scientist, Paul Albrechtsen Research Institute, CancerCare Manitoba

Learning Objectives

At the end of the session, participants will be able to:

1. Identify what a CAR-T cell is and its potential role(s) in clinical medicine.
2. Recognize the rationale for Setting up Point of Care CAR-T manufacturing in an academic facility.
3. Summarize how to manufacture immune cells from pluripotential stem cells and how these cells could be used for clinical applications.

Biographical Sketch

Dr. Szwajcer is a member of the Department of Medical Oncology and Hematology at the University of Manitoba. He is the Manitoba Blood and Marrow Transplant Program Director. He's been working on developing the capacity to manufacture CAR-T cells for human use with his team in the Cell Therapy Laboratory, CancerCare Manitoba.

Yale is a Scientist at the Paul Albrechtsen Research Institute CCMB and Assistant Professor in the Department of Biochemistry and Medical Genetics in the Rady Faculty of Health Sciences at the University of Manitoba. The Michaels lab aims to develop safe, effective and affordable cell therapies for cancer.

Short Snapper

CAR T-cell Therapy: coming soon to a province near you!

Presenter



Dr. Chantalle Menard, MD, MSc
Hematologist, CancerCare Manitoba

Learning Objectives

At the end of the session, participants will be able to:

1. Summarize the status of the implementation process in Manitoba.
2. Discuss the expanding indications for CAR T-cell therapy in hematologic malignancies.
3. Discuss CAR T-cell clinical trial opportunities in Manitoba.

Biographical Sketch

Dr. Menard is a hematologist at CancerCare Manitoba with a special interest in lymphoma, leukemia and bone marrow transplantation. Dr. Menard completed her medical degree and post-graduate training in Internal Medicine and Hematology at the University of Manitoba, as well as a fellowship in Advanced Training in Hematologic Malignancies. Dr. Menard obtained a Master of Science in Healthcare Quality through Queens University and uses her knowledge in Quality Improvement to enhance care delivery and reduce diagnostic delays for patients with cancer in Manitoba. She provides clinical services within the Lymphoma, Leukemia and Bone Marrow Transplant Disease Site Groups.

Short Snapper

Hepatitis B Reactivation during Cancer therapy: Risk and Preventive Strategies

Presenter



Dr. Pam Skrabek, MD
Hematologist, Department of Internal Medicine, Max Rady College
of Medicine

Learning Objectives

At the end of the session, participants will be able to:

1. Discuss the relevance of past and present viral Hepatitis B infection in patients with hematological conditions or cancer.
2. Identify how to screen for Hepatitis B and reduce risk of reactivation while on cancer therapies.

Biographical Sketch

Dr. Skrabek is a Hematologist and Associate Professor in the Section of Hematology and Medical Oncology in Winnipeg with a Master's in Community Health Sciences. Her position is dedicated to clinical work focusing on lymphomas, including a leadership role as chair of the Lymphoproliferative Disease Site Group for CancerCare Manitoba.

Short Snapper Cancer Surgery Quality in Manitoba

Presenter



Dr. Pamela Hebbard, MD, FRCSC
Head, Surgical Oncology, CancerCare Manitoba

Learning Objectives

At the end of the session, participants will be able to:

1. Summarize the breadth of cancer surgeries done across the province.
2. Identify areas of strength and improvement in the cancer surgery system.
3. Recognize areas of improvement in cancer surgery.

Biographical Sketch

Dr. Hebbard is an assistant professor of surgery at the University of Manitoba. She is a general surgical oncologist with CancerCare Manitoba and Shared Health/Winnipeg Regional Health Authority. Her clinical focus is on complex gastrointestinal malignancy, breast cancer and melanoma. She has research and administrative interests in optimizing surgical quality in cancer delivery. She has been the head of surgical oncology/cancer surgery for CancerCare Manitoba and Shared Health since 2020.

Conference Goals and Objectives

The Provincial Cancer Care Conference (previously known as Community Cancer Care Conference) is the largest annual oncology-focused program for healthcare professionals in Manitoba. It is a popular event annually, with typically over 200 individuals attending what has become the best local networking and learning event for the oncology community.

The target audience of this education program includes family physicians in oncology, nurses, pharmacists, nurse navigators and psychosocial oncology clinicians from around the province; who have consistently highlighted the excellent quality of this professional development event.

The goals of this educational program are to:

1. Review up to date diagnosis and treatment strategies for patients with cancer in response to the learning needs of the target audience and CancerCare Manitoba's clinical priorities.
2. Provide a forum for interactive discussion among urban and rural Manitoba health care professionals working in Oncology.
3. Offer a high-quality professional development event to better equip oncology healthcare professionals around the province to care for their patients.

2023 Content Committee

- **Allison Wiens**, Education & Liaison Nurse - Health Equity, CancerCare Manitoba
- **Crystal Bruinooge**, Nurse Navigator, Southern Health-Santé Sud
- **Emma Higgs**, Program Coordinator- Cancer Surgery & Primary Care, CancerCare Manitoba
- **Jennifer Hart**, Pharmacist, Prairie Mountain Health
- **Kristi Hofer**, Interim Director of Systemic Therapy Program, Pharmacy Operations, CancerCare Manitoba
- **Leanne Kyle**, Pharmacist, Prairie Mountain Health
- **Dr. Leonard Minuk**, Hematologist & Head of the Department of Medical Oncology and Hematology, CancerCare Manitoba
- **Dr. Pamela Skrabek**, Hematologist & Lymphoproliferative DSG Chair, CancerCare Manitoba
- **Patricia Bocangel**, Interim Director of Patient Experience, CancerCare Manitoba
- **Shauna Priebe**, Research Nurse, Clinical Trials Unit, CancerCare Manitoba
- **Shelly Watt**, Social Worker, Northern Health Region
- **Tracey Schlamb**, Director of Systemic Therapy Program, Patient Services, CancerCare Manitoba
- **Dr. Tunji Fatoye**, Department Head, Primary Care Oncology

Thank you to all content committee members for your support of the
2023 Provincial Cancer Care Conference!

Credits by Session

Time	Presenter	Topic	Credits Offered	Credits Claimed
INTERACTIVE WORKSHOP				
12:30	Jocelyne Lalonde	Trauma-Informed Care <i>Questions and Discussion</i>	2.8	
14:15	Allison Wiens Irene Maendel	Practicing Trauma-Informed Care: An Interactive Skill-Building Workshop <i>Questions and Discussion</i>		
KEYNOTE PRESENTATION				
19:30	Dr. Rehman Abdulrehman	How Understanding the Psychology of How We Think Can Remove Barriers to Inclusion & Equity <i>Questions and Discussion</i>	1	
LYMPHOPROLIFERATIVE SESSION				
07:30	Dr. Catherine Moltzan	Lymphoma Work-Up and Overview	1.4	
07:55	Dr. Pam Skrabek	Systemic Therapies for Lymphoma: Review and Updates		
08:20	Dr. Mark Kristjanson	Breaking Down Tumour Lysis		
08:40	<i>above</i>	<i>Shared Questions and Discussion</i>		
09:25	Dr. Leonard Minuk	A PEP Talk on Myeloma	1.5	
09:50	Dr. Emily Rimmer	Multiple Myeloma Treatments Refresher		
10:15	Dr. Cornelius Woelk	Pain and Symptom Management for Multiple Myeloma		
10:40	<i>above</i>	<i>Shared Questions and Discussion</i>		
ONCOFERTILITY PLENARY				
11:05	Mackenzie Jansen Ian Scott	Oncofertility: Caring for Your Patients <i>Questions and Discussion</i>	0.5	
INDIGENOUS COMMUNITY HEALTH PLENARY				
11:35	Tracy Abraham Crystal Behrends	Increasing Awareness about Colorectal Cancer Screening using Creative Strategies: The Giant Inflatable Colon Project <i>Questions and Discussion</i>	0.55	

Time	Presenter	Topic	Credits Offered	Credits Claimed
BREAKOUT SESSIONS				
13:10	Dr. Karver Zaborniak	Hypersensitivity at CancerCare: What's New?	0.5	
	Jodi Hyman			
	Dr. Marshall Pitz	New Drugs for Breast Cancer		
	Blair Einarson	Antibody Drug Conjugates		
	Dr. Debbie Whitney	Treating the Whole Person		
BREAKOUT SESSIONS				
13:45	Theresa Whiteside	Hazardous vs. Non-Hazardous Drugs	0.5	
	Dana Augst			
	Dr. Rebekah Rittberg	Novel Therapies in Lung Cancers		
	Danica Wasney	On the Horizon: Emerging Drugs and Indications for Cancer Care		
	Dr. Debbie Whitney	Mindfulness Based Stress Reduction: A Group Intervention for Cancer Patients and Their Families		
	Kimberly Proch			
RESEARCH PLENARY				
14:35	Dr. David Szwajcer	Chimeric Antigen Receptor-T (CAR-T) Cells	0.5	
	Dr. Yale Michaels	<i>Questions and Discussion</i>		
SHORT SNAPPERS				
15:10	Dr. Chantalle Menard	CAR T-cell Therapy: coming soon to a province near you!	1	
15:25	Dr. Pam Skrabek	Hepatitis B Reactivation during Cancer therapy: Risk and Preventive Strategies		
15:40	Dr. Pamela Hebbard	Cancer Surgery Quality in Manitoba		
15:55	<i>Above</i>	<i>Shared Questions and Discussion</i>		
		Total Credits	10.25	

I certify that I am only claiming credits related to the sessions that I have attended.

Participant's Name

Participant's Signature

Certificate of Attendance

CONTINUING PROFESSIONAL DEVELOPMENT

This is to certify that

has completed the Continuing Professional Development program entitled

**2023 Provincial Cancer Care Conference
CERT+ PROGRAM ID# 200705-001**

on
October 12-13, 2023
Winnipeg, Manitoba

Credits for Family Physicians

This **Group Learning** activity has been certified by the College of Family Physicians of Canada and the Manitoba Chapter for up to 10.25 Mainpro+ credits.

This program has received an educational grant or kind-support from Abbvie Corporation, Accord Healthcare, Inc., Amgen, AstraZeneca Canada, CancerCare Manitoba Foundation, Forus Therapeutics, GlaxoSmithKline, Gilead Sciences Canada, Inc. & Kite, Hoffman-La Roche Limited, Incyte Biosciences Canada, Janssen | Johnson & Johnson, Knight Therapeutics, Merck & Co., Inc., Mölnlycke Health Care Canada, Pfizer Canada Inc., Seagen Canada, Taiho Pharma Canada Inc., Teva Canada, Varian Medical Systems

Claiming your credits: Please submit your credits for this activity online at www.cfpc.ca/login. Please retain proof of your participation for six (6) years in case you are selected to participate in credit validation or auditing.

ADOLESCENT & YOUNG ADULT (AYA) PROGRAM

Patients aged 15-39...

have complex medical, psychosocial, fertility, sexuality, informational, developmental and vocational needs distinct from their younger and older counterparts with cancer.



AYA CNS

Mackenzie Jansen RN, BN, MN(c)

Offers one-on-one visits to better understand patients needs and help find ways to help their during your cancer journey.

Refer through ARIA @ **clinical nurse specialist - adolescent young adult**



Our Goal is...

To provide personalized, multidisciplinary and enhanced cancer care and education, access to clinical trials, psychosocial support, fertility preservation, sexuality counselling, physical and vocational rehabilitation, palliative and survivorship care to AYAs diagnosed with cancer in Manitoba.

AYA Dietitian

Caitlin Woodrow RD

Patients benefit from dietitians if they request information on nutritional needs during cancer treatment, are experiencing unwanted weight loss or gain due to your cancer or treatments, have difficulty with food or fluid intake, or have questions about their nutritional health.

Refer through ARIA @ **dietitian - pediatric adolescent young adult**



AYA PSO Ian Scott MSW, RSW

Provides individual, couple, and family counselling, as well as facilitates support groups and programs.

Refer through ARIA @ **psychosocial oncology - adolescent young adult**



Sexuality Counselor

Dr. Anne Katz RN, MN, PhD

Provides individual, couple, and family counselling, as well as facilitate support groups and programs.

Refer through ARIA @ **sexuality counsellor**



Young Adult Cancer Support (YACS)

Support group for young adult patients between 18-39.

Call Ian at 204-787-2191.



Contact CCMB's AYA Program

ayaprogram@cancercare.mb.ca



Cancer Navigation

No matter where someone lives in our province, CancerCare Manitoba offers patients and their family members the guidance and support they need.

In collaboration with its partners, CancerCare Manitoba has established Cancer Navigation Services, a free resource of health professionals available to assist people living in five regional health authorities: Interlake Eastern, Northern, Prairie Mountain, Southern and Winnipeg.

Each regional cancer program “hub” has a Navigation team that includes Nurse Navigators, Psychosocial Oncology Clinicians and Community Engagement Liaisons.

Patients and their family members can contact Navigation Services directly or be referred by a primary care provider or any other health care professional.

Interlake Eastern

1-855-557-2273

Northern

1-855-740-9322

Prairie Mountain

1-855-346-3710

Southern

1-855-623-1533

Winnipeg

1-855-837-5400

Southern Health - Santé Sud

Your personal cancer treatment navigator

In the Southern Region, call 1 (855) 623-1533

Shayna, Cancer Patient Navigator

CancerCare Manitoba ActionCancerManitoba

Southern Health - Santé Sud

This graphic features a woman with blonde hair, Shayna, smiling. The background is light blue with a white circular logo. Text includes 'Your personal cancer treatment navigator', 'In the Southern Region, call 1 (855) 623-1533', and 'Shayna, Cancer Patient Navigator'. Logos for CancerCare Manitoba and Southern Health - Santé Sud are at the bottom.

Winnipeg Regional Health Authority

Cancer Patient Navigator, Debbie

A shoulder to lean on.

Every step of your journey.

CancerCare Manitoba ActionCancerManitoba

World Cancer Day 4 February

This graphic features a woman with glasses and brown hair, Debbie, smiling. The background is orange with a white circular logo. Text includes 'Cancer Patient Navigator, Debbie', 'A shoulder to lean on.', 'Every step of your journey.', 'CancerCare Manitoba ActionCancerManitoba', and 'World Cancer Day 4 February'.

Northern Regional Health Authority

Your personal cancer treatment navigator

In the Northern Region, call 1 (855) 740-9322

Lesley, Cancer Patient Navigator

CancerCare Manitoba ActionCancerManitoba

NORTHERN HEALTH AUTHORITY

This graphic features a woman with blonde hair and glasses, Lesley, smiling. The background is light blue with a white circular logo. Text includes 'Your personal cancer treatment navigator', 'In the Northern Region, call 1 (855) 740-9322', and 'Lesley, Cancer Patient Navigator'. Logos for CancerCare Manitoba and Northern Health Authority are at the bottom.

Prairie Mountain Health

Your personal cancer treatment navigator

In the Prairie Mountain Region, call 1 (855) 346-3710

Kelsey, Cancer Patient Navigator

CancerCare Manitoba ActionCancerManitoba

PRAIRIE MOUNTAIN HEALTH

This graphic features a woman with glasses and long brown hair, Kelsey, smiling. The background is light blue with a white circular logo. Text includes 'Your personal cancer treatment navigator', 'In the Prairie Mountain Region, call 1 (855) 346-3710', and 'Kelsey, Cancer Patient Navigator'. Logos for CancerCare Manitoba and Prairie Mountain Health are at the bottom.

Winnipeg Regional Health Authority

Cancer Patient Navigator, Nicole

Anywhere in Manitoba.

We're here for you.

CancerCare Manitoba ActionCancerManitoba

World Cancer Day 4 February

This graphic features a woman with short brown hair, Nicole, smiling. The background is purple with a white circular logo. Text includes 'Cancer Patient Navigator, Nicole', 'Anywhere in Manitoba.', 'We're here for you.', 'CancerCare Manitoba ActionCancerManitoba', and 'World Cancer Day 4 February'.

Interlake-Eastern Regional Health Authority

Your personal cancer treatment navigator

In the Interlake Eastern Region, call 1 (855) 557-2273

Michelle, Cancer Patient Navigator

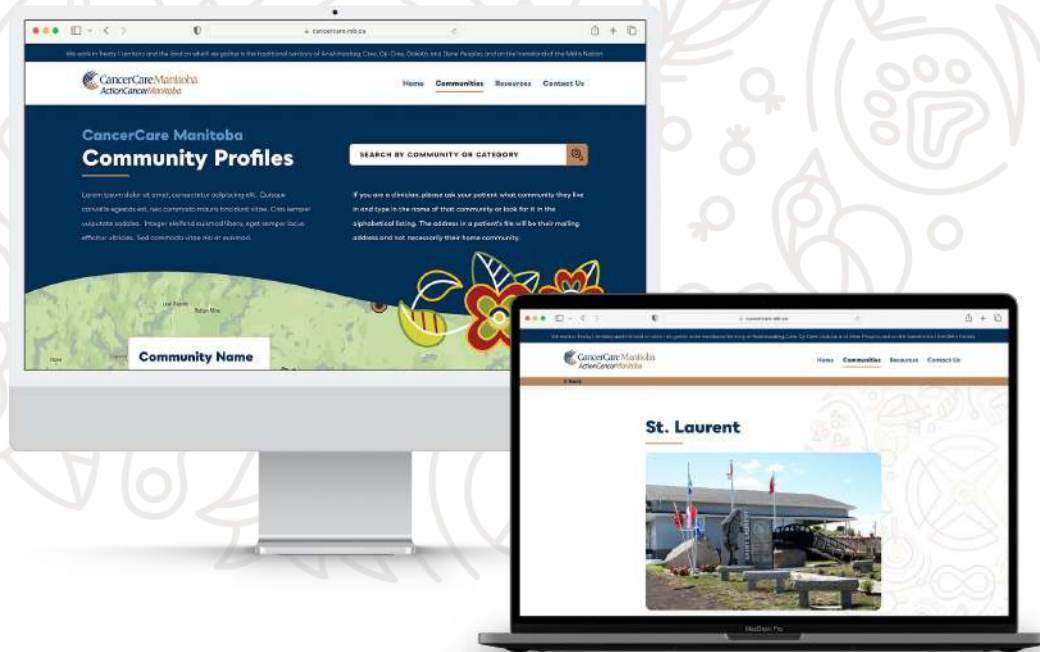
CancerCare Manitoba ActionCancerManitoba

Interlake - Eastern Regional Health Authority

This graphic features a woman with dark hair, Michelle, smiling. The background is light blue with a white circular logo. Text includes 'Your personal cancer treatment navigator', 'In the Interlake Eastern Region, call 1 (855) 557-2273', and 'Michelle, Cancer Patient Navigator'. Logos for CancerCare Manitoba and Interlake-Eastern Regional Health Authority are at the bottom.

Community Profiles

First Nations • Métis • Inuit



The Indigenous Community Profiles webpage helps healthcare providers develop safer and more realistic care plans for patients returning to their communities by describing geographical and travel information in the community, including healthcare and community resources.

CancerCare Manitoba worked with First Nation, Métis and Inuit partners to gather community information for these profiles.

Visit ccmbindigenouscommunityprofiles.ca

CancerCare Manitoba Prevention & Screening UPDATE

ColonCheck

As of June 2023, ColonCheck has a new colon cancer screening test called the Fecal Immunochemical Test or FIT. To register for our webinar "Pulse Check" for more information on changes to colorectal cancer screening and to find the new FIT requisition form, visit cancercare.mb.ca/screening/hcp.

Fecal Immunochemical Test (FIT) Requisition
Colorectal cancer screening and prevention

PATIENT INFORMATION

HEALTHCARE PROVIDER INFORMATION

INDICATIONS FOR TEST - CHECK ONE BOX

Indication	Indication	Indication
<input type="checkbox"/> Age 50-74	<input type="checkbox"/> Family history of colorectal cancer (first degree relative with colorectal cancer or adenomatous polyps)	<input type="checkbox"/> Previous abnormal colonoscopy
<input type="checkbox"/> Age 50-74	<input type="checkbox"/> Family history of colorectal cancer (second degree relative with colorectal cancer or adenomatous polyps)	<input type="checkbox"/> Previous abnormal sigmoidoscopy
<input type="checkbox"/> Age 50-74	<input type="checkbox"/> Family history of colorectal cancer (third degree relative with colorectal cancer or adenomatous polyps)	<input type="checkbox"/> Previous abnormal sigmoidoscopy

For requisition to ColonCheck at 204-774-0341

CervixCheck

Healthcare Provider Q&A - *Question:* What do I tell my patient who has a low-grade cytology (Pap test) result but is negative for hrHPV? *Answer:* A low grade Pap test result is a mild abnormality, likely caused by low risk HPV type that is known not to cause cancer. All high risk types (cancer causing) tested for were not detected in your sample, therefore, we feel comfortable going back to routine cervical cancer screening.

BreastCheck

Early detection of breast cancer increases treatment options and typically provides better outcomes. Eligible Manitobans can make appointments by calling 1-855-95-CHECK. No referral is required. BreastCheck has four permanent clinics in Brandon, Boundary Trails, Thompson, and Winnipeg. The BreastCheck Mobile Clinics continue to circulate throughout the province. To review upcoming clinics visit cancercare.mb.ca/breastcheck.

Cancer Prevention

We have an interactive resource to inform people how they can reduce their risk of cancer. The Decision Aid asks a series of questions to provide tailored prevention and screening recommendations. Try it out at PracticePrevention.ca.





Support

Advocacy
End-of-Life Companions
Grief Seminars
Monthly Bereavement Messages
No One Dies Alone (NODA)
Support for Grieving Youth
Telephone Bereavement Support



Education

Compassionate Care Course
First Nations Community Workshops
Library & Resource Centre
Professional Development
Provincial Palliative Care Conference
Student Placements
Youth Grief Support Facilitator



Events

Light the Memories (April)
Hike for Hospice (May)
Celebrate Life Breakfast (May)
Love Takes Flight Butterfly Release (June/July)
Poinsettias for the Holidays (Nov/Dec)
Memory Tree (December)

4p
palliative manitoba

Celebrate our decade
of community service



Ruby Anniversary Gala

celebration of:



Thursday, October 26, 2023 – 6:00 PM
Viscount Gort – 1670 Portage Avenue

Come experience an evening of multicultural delights with entertainment and cuisine from the Indigenous, Filipino and Ukrainian communities as we celebrate our 40th Anniversary

www.palliativemanitoba.ca/events/ruby-anniversary-gala/



Moving Forward

Transitions are key to patient safety and well-being



A patient's last appointment at CancerCare Manitoba can be fraught with emotion. The transition back to the primary care setting can be stressful. Similarly, a transition to palliative care can be overwhelming for patients and their families. The Transitions Initiative is focused on making the process seamless and less stressful for patients, their families, and primary care providers. Ensuring patients, families and primary care providers receive clear communication and transfer of information at pivotal cancer transition points is vital.

CancerCare Manitoba's innovative Transitions Initiative is recognized across Canada and internationally for work that is setting a new standard of care for cancer patients. Transition information including provincial care recommendations are available for Breast, Cervical, Colorectal, Leukemia, Lymphoma, Melanoma, Gynecological, Prostate, Testicular, Uterine, and Advanced Cancer patients. Other groups are coming soon. A specific resource for adolescent and young adult patients has also been developed to address some of the challenges faced by this group at transition.

www.cancercare.mb.ca/followupcare



Transitions of Care

www.movingforwardaftercancer.ca

Changing Focus

Improving Advanced Cancer Transitions

The Changing Focus, Living with Advanced Cancer initiative is working to enhance communication and assist patients living with advanced cancer and their caregivers transition to a palliative care approach to care by creating care plans and implementing transitional appointments.

At the transition appointment patients are provided booklets containing information addressing general issues for all advanced cancer patients such as symptom management, advance care planning, as well as specific information for family/caregivers.

www.livingwithadvancedcancer.ca

Changing Focus

Living with
Advanced Cancer



For more information,
please contact:

Email: transitions@cancercare.mb.ca
CC16-825 Sherbrook St. WPG, MB, R3A1M5



**CANO
ACIO** | Manitoba
Chapter
Canadian Association of Nurses in Oncology
Association canadienne des infirmières en oncologie

Join Canadian Association of Nurses in Oncology Today! So much to learn....

<https://www.cano-acio.ca/page/MembershipType>



CancerCare Manitoba Systemic Therapy Program

Pharmacy and Patient Services

Come visit our table to meet staff from the Systemic Therapy Program and learn more about Systemic Therapy Program Initiatives.



**QUALITY & PATIENT
SAFETY DEPARTMENT**

The Quality and Patient Safety Department is involved in many ways within CancerCare Manitoba.

Initiatives include: Accreditation, Critical Incidents, RL6, Medication Reconciliation, Infectious Disease, Screening and more.

**VISIT
OUR
BOOTH!**





Become a member of ARNM now and help shape the future of health care!

As a member, you can help strengthen and empower the profession of nursing.



Join a committee

Advocacy, Governance, Finance, Professional Development, Emerging Leaders Network, & Awards



Talk Tuesday

Attend the weekly sessions or volunteer to present a session



Share ideas

Through email or over the phone



Network

Invite colleagues to become members or invite ARNM to speak at nursing events



Lend your voice

Ask electoral candidates about nursing issues

Reach out

 204-992-1520

 info@arnm.ca

 arnm.ca

varian

A Siemens Healthineers Company



GSK



Extraordinary
medicine requires
extraordinary
science.

At Roche, we are committed to both.
Discovering and developing innovative
medicines and diagnostic tests to help
people live better, longer lives.

www.rochecanada.com

© 2022, Hoffmann-La Roche Limited



Hoffmann-La Roche Limited
Mississauga, ON L5N 0M6

Seagen[®] CANADA

abbvie

A Decade of Commitment
to Making an Impact
on Patients' Lives



Endless Possibilities

FROM CANADA. FOR CANADA.

What happens when you bring together a team of Canadian life sciences specialists with a passion for making a profound difference?

You get the opportunity to unlock Canada's potential as a global life sciences innovator, and the promise of novel treatments to enhance the lives of Canadian hematology-oncology patients.

For science. For Canada. For patients.
ForusTherapeutics.com



Copyright © 2023 FORUS Therapeutics Inc.

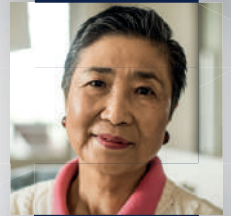
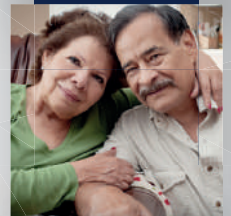
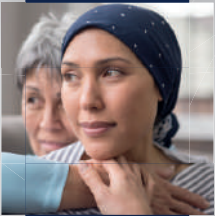
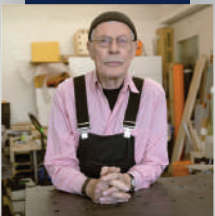
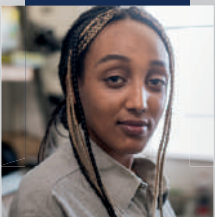
Gilead and Kite Oncology – Creating the future of oncology

From ADCs and small molecules to cell therapy, our R&D programs and partnerships are changing the way cancer is treated – helping to create possibilities for people with cancer.



ADC=Antibody-Drug Conjugates

GILEAD and the GILEAD logo are trademarks of Gilead Sciences, Inc. KITE and the KITE logo are trademarks of Kite Pharma, Inc. © 2023 Gilead Science, Inc. All rights reserved.



Discover Incyte



Research.
Discovery.
Incyte Biosciences Canada.!

Visit incyte.com

Operating in Canada since April 2020.!

Contact us to learn more!

1-833-309-2759 medinfocanada@incyte.com

Reference: 1. Cision. Incyte Biosciences Press Release. Accessed on September 17, 2021.



PHARMACEUTICAL COMPANIES OF
Johnson & Johnson

We believe that when you put people first, results follow

Our passion for medicine is fuelled by the people who count on us to invent a more hopeful future. At the heart of our efforts to help fight cancer, prevent infectious diseases, and create innovative medicine, is the same belief we built our legacy on nearly 130 years ago: putting people first leads to a legacy that lasts.



© 2023 Merck & Co., Inc., Rahway, NJ, USA and its affiliates. All rights reserved.
CA-NON-02459



Believe
it

Radiotherapy
skin reaction
can be
prevented*



*according to clinical research



accord

The Evolution of Generics
Le générique évolutif

AMGEN

Proud to Support The Provincial Cancer Care Conference 2023

Amgen harnesses the best of biology and technology to make people's lives easier, fuller, and longer. We draw upon our deep knowledge of science to push beyond what's known today. With roots in the biotech revolution, we are one of the world's leading independent biotech companies – fighting the toughest diseases and helping millions of people globally.



For more information, visit www.amgen.ca and follow us on twitter @AmgenCanadaGM, and Instagram and Facebook @AmgenCanada.

©2023 Amgen Canada. All rights reserved.

***Knigh**t*

Teva Canada cares about patient safety

Please remind patients to take care as they take their medicines. It's important for patients to:

- understand their medications
- form good habits when taking medicines
- practise safe medicine storage and disposal
- recognize the signs of prescription drug misuse and abuse



Scan this QR code or visit

TevaCanada.com/MedicationSafety
to share patient-friendly tips on the safe use of medications.



 TAIHO PHARMA CANADA, INC.

Caring for cancer differently...
It's all in the delivery

© Copyright 2023, Taiho Pharma Canada, Inc. All rights reserved.
TCHM-CA-0026

This program has received an educational grant of in-kind support from:

Abbvie Corporation, Accord Healthcare, Inc., Amgen, AstraZeneca Canada, CancerCare Manitoba Foundation, Forus Therapeutics, GlaxoSmithKline, Gilead Sciences Canada, Inc. & Kite, Hoffman-La Roche Limited, Incyte Biosciences Canada, Janssen | Johnson & Johnson, Knight Therapeutics, Merck & Co., Inc., Mölnlycke Health Care Canada, Pfizer Canada Inc., Seagen Canada, Taiho Pharma Canada Inc., Teva Canada, Varian Medical Systems

Presenting Sponsor



All funds raised stay in Manitoba.

Platinum Sponsors



Gold Sponsors

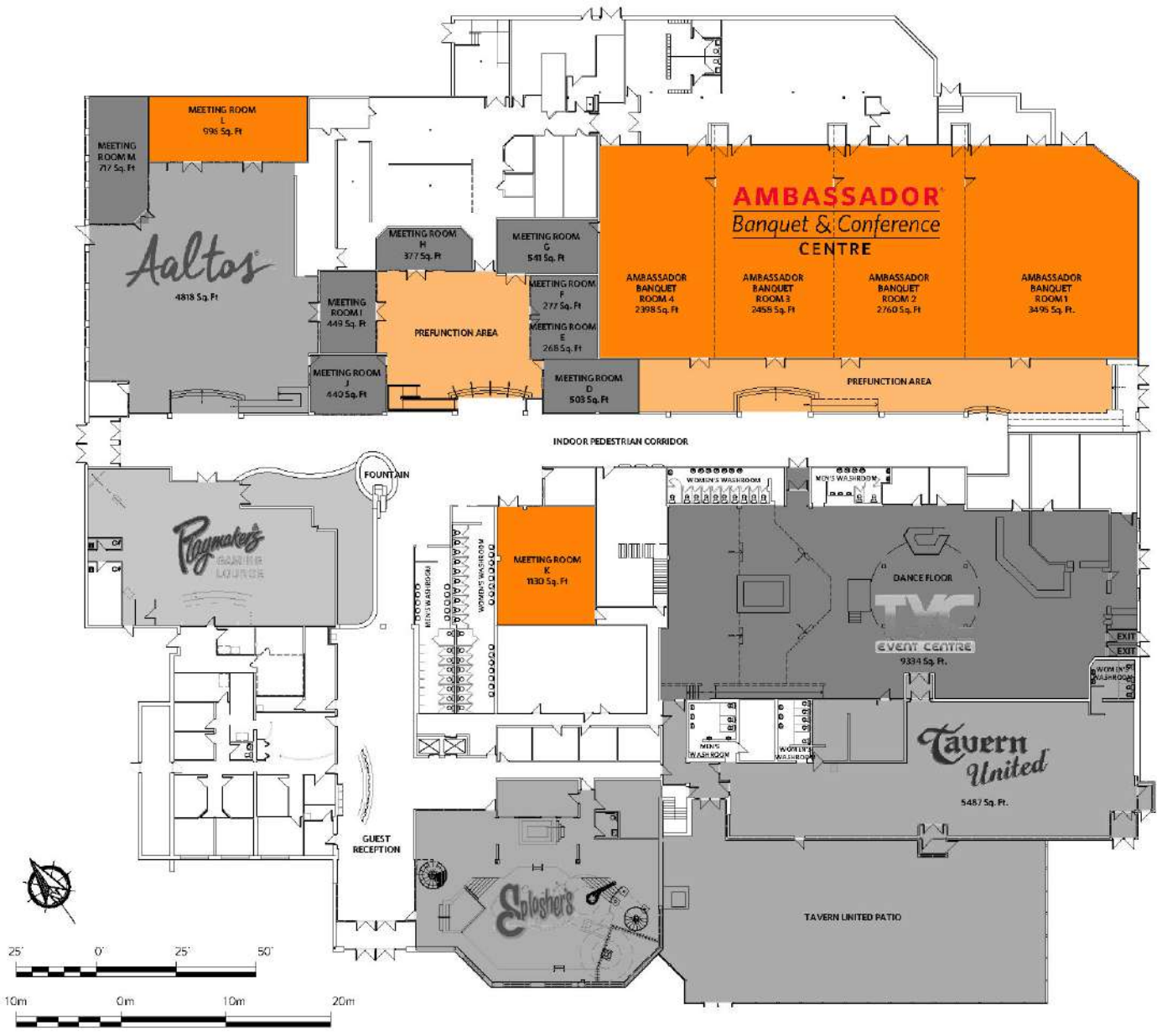


Silver Sponsors



Bronze Sponsors







All funds raised stay in Manitoba.



@CancerCareMB



@CancerCareMB



@cancercare_mb_news

www.cancercare.mb.ca/conference